

2022 NATIONAL PICTURE JUDGING CONTEST

Results & Reasons

Sponsored by:



Each year, the National Swine Registry sponsors the National Picture Judging Contest. This competition is open to youth and adult participants and includes divisions for 4-H, FFA and collegiate teams. The contest ran in the November/December 2021 issue of *Seedstock EDGE* and on *nationalswine.com* with entries due February 1, 2022. Here are this year's official results and reasons.

**Ties were broken based on individual class scores, beginning with the most difficult class or the class with the lowest sum of cuts.*

College Individual Division (72 Contestants) 500 Points Possible

1st Place Total Score: 494
Dane Robertson

2nd Place (Three-way tie for second. Could not be broken.) Total Score: 491
Caleb Boden, Nate Brookshire & Zach McCall

3rd Place Total Score: 490
Jeremy Jackson

4th Place Total Score: 488
Zach Cline

5th Place Total Score: 486
Fatima Santiago

Junior Individual Division (320 Contestants) 500 Points Possible

1st Place Total Score: 485
Michaela Miller

2nd Place Total Score: 484
Kaydence Gunlock

3rd Place Total Score: 483
Lane Beyers

4th Place Total Score: 482
Josie Weers

5th Place Total Score: 476
Britten Himle

Adult Individual Division (44 Contestants) 500 Points Possible

1st Place Total Score: 480
Kevin Williams

2nd Place Total Score: 479
Clay Roland

3rd Place Total Score: 477
McLayn Musick

4th Place Total Score: 476
Tyler Johnson

5th Place Total Score: 471
Burt Williams

FFA Team Division (32 Teams) 2,000 Points Possible

1st Place Total Score: 1,428
Ghostbusters
Britten Himle, Amelia Williamson,
Jillian Seward & Lillie Thornton

2nd Place Total Score: 1,425
Southern Coffey County 2
Kaydence Gunlock, Aden Harmon,
Brayton Lind & Josie Weers

3rd Place Total Score: 1,418
The Rejects
Aiden Auld, Braden Pickard,
Ryan Hege & Ethan Rich

4th Place Total Score: 1,417
The Skywalkers
Elle Standlee, Ashton Rusk, Luke
Bartosh & Madison McCaughey

5th Place Total Score: 1,415
Fair Grove FFA
Hannah Morris, Augustus McCroy,
Brett Sartin & Taylor Rode

4-H Team Division (20 Teams) 2,000 Points Possible

1st Place Total Score: 1,406
Marion County 4-H Team Purple
Kaley Blomberg, Hunter Greenwalt,
Sadie Mellott & Madison Smith

2nd Place Total Score: 1,378
Carroll County B
Kristin Waters, Grant Waters, Nora
Kate McGaugh & Brody Swindler

3rd Place Total Score: 1,353
Frederick VA 4-H 1
Emma Jo Donnelly, Emma Wisecarver,
Emily Vincent & Marie-Claire Vincent

4th Place Total Score: 1,352
Marion County 4-H Team Blue
Hallie Borcharding, Parker Lewis,
Tayva Mellot & Jonathon Wilkins

5th Place Total Score: 1,340
Trumbull 4-H Buckeyes
Ronald Imhoff, Miley Edelman,
Sydney Vondrasek & Avery Rice

College Team Division (12 Teams) 2,500 Points Possible

1st Place Total Score: 1,963
Neck Nation
Gage Tebo, Nate Brookshire, Caleb Boden,
Zach McCall & Jeremy Jackson

2nd Place Total Score: 1,933
WIU Gold
Zach Cline, Fatima Santiago, Kaelin Nielsen,
Reid Allen & Jeb Schwager

3rd Place Total Score: 1,902
ICC Gold
Hailey Vanopdorp, Ryan Michael, Mia
Freyermuth, Carson Deppe & Luke Harker

4th Place Total Score: 1,886
Lake Land Freshman Black
Drake Fletcher, Avery Hankins, Ty Knodle,
McLaine Engnell & Delaney Hemann

5th Place Total Score: 1,876
Lake Land Freshman White
Braden Musgrave, Paige Pence, Logan Rhoads,
Tyler Miller & Cole Murphy

Class 1 – Duroc Boars Scenario: Rank these boars as they would be utilized in a commercial operation focusing on growth and meat quality. Terminally bound offspring will be marketed through the Certified DUROC® Pork program.



Actual Data: 156 DAYS to 250, 7.9 LEA, 3.9 IMF, 118 TSI

Actual Data: 154 DAYS to 250, 8.0 LEA, 4.1, IMF 117 TSI

Actual Data: 149 DAYS to 250, 8.5 LEA, 4.6 IMF, 121 TSI

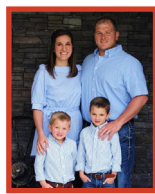
Actual Data: 161 DAYS to 250, 6.9 LEA, 3.1 IMF, 110 TSI

Official Placing: 3-2-1-4 • Cuts: 3-2-5 • Reasons: Lynsee Pullen, Indiana

3214 is the placing of the Duroc Boars. As you study the data and scenario, you see that the top three boars all fit the bill for this operation, with 3 excelling in performance across the board. 3 is the stout boned, bold bladed boar that combines genuine muscle shape along with an extended and attractive design. He comes out of his blade with a bold, thick top back over a wide lower skeleton. He is the complete, combination boar that will help propel the Certified DUROC® Pork Program. The close decision falls in the middle pair, where I prefer the upper rib shape, and

center body density of 2 over 1. Simply put, 2 just offers more mass up high. On the contrary, 1 reads with a notch more foot and bone, while being a longer fronted, more attractive made boar. However, he doesn't read with as much true shape behind his blade, and I'd like to see him with a notch more rear flank. In the bottom pair it is still a logical 1 over 4 from not only a genetic standpoint, but more importantly a structural standpoint. 1 is more laid back in his shoulder, offers more flex through his hock and hind leg, all the while being the cleaner fronted boar

who is level down his top and sets his tail up higher. It does appear that 4 rivals the class in bone size, skull width, and offers plenty of thickness, but one would determine that his straighter angles and poorer numbers would make him the least desirable boar for the intended scenario.



OFFICIAL: Lynsee Pullen • Indiana

Lynsee Pullen works alongside her husband and family in their livestock businesses. Lynsee and her husband, Kyle, and two sons, Kashton and Kodee, operate Pullen Showpigs where they focus on raising Duroc showpigs and breeding stock. She also helps run her family's boar stud, Shaffer's Goldrush. Additionally, Lynsee and Kyle are co-owners in Walton Webcasting. Lynsee serves on a variety of industry boards at the state and national level. She enjoys her opportunities to work with showmen while judging livestock shows at the local, state and national level.

Class 2 – Hampshire Boars Scenario: Rank these boars as they would be utilized on purebred Hampshire sows to generate Hampshire Barrows for the new Pedigreed Hampshire Barrow Class at the 2022 Oklahoma Youth Expo.



Official Placing: 2-1-3-4 • Cuts: 2-2-4 • Reasons: Ty Kim, Georgia

2's masculine image and incredible dimension coupled with a show ring look establishes him as the herd boar prospect to sire elite pedigreed barrows. Sure my winner could be longer and leveler out of his hip, but he's pulled apart coming and going with a big shapely back. Plus, barrow progeny equipped with his elevation and extension up front and stout, flexible hind leg should catch a second look at the highest level.

Sure the dark pigmented 1 is leveler hipped, but unfortunately he can't match the added base width and stoutness of feature of my winner. Regardless, his presence and proportions from the side get the nod in the middle, not to mention he's more relaxed in his angles off either end. No question the rugged, powerful 3 is the biggest testicled and feeds the most shape and dimension out of the backside of his

blade. But at the same token he reads a bit forward in his blade and as a result is lower in his neck attachment. Still, for the portion of the sow base needing a shot more power, I still see more value in the heavier structured 3 who's more pliable about his center rib. Sure 4 ties a neater neck higher out of the top side of his blade. But I'll stick to my initial impression and leave the frailest featured, driest centered hog 4th.



OFFICIAL: Ty Kim • Georgia

Ty Kim is currently a senior at Kansas State University. Following graduation this May, Ty will continue his education at KSU by pursuing a master's degree. While at K-State, Ty was a member of a competitive livestock judging team. Ty concluded his collegiate livestock judging career at the 2021 NAILE Senior College Contest, where he was named Reserve High Individual. Ty also serves as the NJSA Junior Board of Directors Vice President of Operations.

Class 3 – Landrace Boars Scenario: Rank these boars as they would be selected for use in a purebred operation that primarily focuses on producing Landrace females for the purpose of F1 female production.



1

EPDs: +0.42 NBA, -0.14 WTE, 125 MLI



2

EPDs: +0.29 NBA, +0.17 WTE, 109 MLI



3

EPDs: +0.33 NBA, -0.09 WTE, 115 MLI



4

EPDs: +0.32 NBA, -0.08 WTE, 116 MLI

Official Placing: 1-3-4-2 • Cuts: 4-2-5 • Reasons: Wade Hendricks, Indiana

A very unique class in these Landrace boars. It's one with many different shapes and sizes which I find interesting when we go to line this particular class up. There however is one that I think has to lead off and that's 1. He's a stout made, big bodied one, that I admire for his extreme fore rib and added substance of bone. I like this one for being a no holes, complete, proportional hog that makes his balance and design stand out. It gets close however with 3 having extra elevation in a larger skeleton, which is important for the

Landrace breed. 3 also displays a longer more angular hip. However 1 puts it all together in a more complete package, with extra substance and stoutness.

3 and 4 are close and similar in the middle pair. 3's added advantage of height of shoulder, forearm, and length of front end gets him the nod in securing the second position. I do admire 4 for being a masculine, shapely hog, that looks to have a big back, blade, and opened up chest. However 4 lacks that comfort and looseness of skeleton that 3 does and 4 is

the worst when it comes to skeletal design and angles of this pair.

In the bottom pair 4 is over 2 because of his extra muscularity. He opens up with a big blade and added shape and dimension out through his hip. I do admire 2 for being a heavy duty, big bodied hog, that appears to be growthy and easy doing. However he is the weakest about his top line, plainest through his front end, and his data is the most detrimental to the given scenario.



OFFICIAL: Wade Hendricks • Indiana

Wade Hendricks grew up on a purebred swine operation in Indiana. He attended Iowa State University where he obtained a bachelor's degree in animal science. He is currently a herdsman at Drake Purebred Farms in Cambridge City, Indiana. Wade also runs approximately 15 Duroc sows where the focus is raising breeding stock and showpigs. Wade currently serves on the NSR Duroc Board of Directors.

Class 4 – Yorkshire Boars Scenario: Rank these boars as they would be purchased by a showpig producer who plans to utilize these Yorkshire boars on his purebred sows for his daughter's showpig program and some elite crossbred sows to generate candidates for the Purebred Influenced Crossbred Division at The Exposition and National Junior Summer Spectacular.



1



2



3



4

Official Placing: 2-1-3-4 • Cuts: 4-2-3 • Reasons: Ben Lenig, Indiana

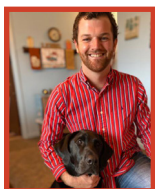
From blade back I think the 2 boar best represents what we're trying to make in the showpig industry. He's the level backed, shapely topped, proportional made hog, that's the stoutest in his feature, and still has an attractive stout look up front. Some may tie into 1's boxy, rugged makeup, but his added stoutest comes with a plainer

look up front.

You could argue the middle pair for me, I prefer 1's length of hip and stoutness of feature over 3 to cover a higher variety of sow lines. But 3's added center dimension and shape to his back is very desirable to inject in your sow program.

Keeping things simple here on the bottom,

3 has more EST's for me in terms of bone, body and stoutness. His internal dimension and muscularity is more acceptable and he still maintains right in his angles. Taking nothing away from the prettier designed boar in 4 but needs to be bolder and stouter in his skeleton to move up any higher.



OFFICIAL: Ben Lenig • Indiana

Ben Lenig is currently the herdsman at Crossroads Genetics in Indiana. Ben and his brother, Nate, have their operation Lenig Bros. Genetics consisting of roughly 10 Duroc, Landrace, and Yorkshire sows. Ben currently serves on the NSR Landrace Board of Directors, and the Indiana Duroc Breeders Association as a Breed Manager for the Indiana State Fair. Ben enjoys traveling the country judging pig shows at all levels.

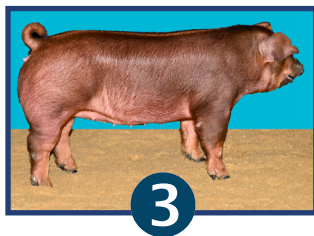
Class 5 – Duroc Gilts Scenario: Rank these gilts as replacements in a purebred Duroc operation that places special emphasis on generating boars for exhibition and domestic commercial clientele.



EPDs: -3.0 DAYS, +0.19 IMF, 115 TSI



EPDs: -2.9 DAYS, +0.20 IMF, 116 TSI



EPDs: -2.0 DAYS, +0.06 IMF, 107 TSI



EPDs: -3.2 DAYS, +0.21 IMF, 120 TSI

Official Placing: 4-2-1-3 • Cuts: 3-2-7 • Reasons: Wade Hendricks, Indiana

After evaluating one of the deepest classes of the contest, the committee found this to be a fairly straight forward class where you have to find 4 to lead off and an extremely close pair in the middle. This trio is one of extreme quality. 4 is the balanced, proportional female of the class. So good when we talk about making females correct and angular. Study how this one's neck ties into her spine, her correct length and angle to her rump, and set to her hock. It makes it fun when the data and the quality of livestock go together. 2 however is the softer centered, bigger bodied female. Awesome from a skeletal and build

standpoint. I admire the looseness and flexibility this one displays. But at the end of the day when compared to 4, she appears to get more one dimensional being flatter and plainer. With this being said 2 also gets the nod for having a better set to her shoulder and one that has extra stoutness of structure.

In an extremely close middle pair of females 2 dominates 1 in sheer balance and design. 2 is the problem free one that rivals our class winner and follows type and kind. I really like 2 in terms of length of front end and comfortable skeleton. 1 may appear to be the bulky, stout female

that displays a high amount of muscularity. However 1 is the smallest and roundest about her design, though she still has exceptionally high quality data for the scenario.

In the bottom pair I believe it's fairly simple, finding 1 and using her for her added substance, width of skeleton and soft cavity to use over 3. 3 however is a heavy boned, stout made female with a big rear leg. She also has extra stoutness of features. But at the end of the day she is the most compact, lacks the extras when it comes to length of body and front end, and has the most detrimental data for the given scenario.

Class 6 – Hampshire Gilts Scenario: Rank these gilts as they would be purchased by a progressive Hampshire breeder focused on generating high quality Hampshire show gilts and capturing the unprecedented value of belted females at public auction.



1



2



3



4

Official Placing: 2-1-3-4 • Cuts: 5-3-2 • Reasons: Lynsee Pullen, Indiana

What an incredible class of elite Hampshire gilts that all have a place to propel the belted breed forward in an exciting way! Even with this said, there is a sure unique find in the 2 gilt. It is a definite challenge to build one with such a slick, feminine head and neck, yet offer so much brood power and a fat hind leg, while still correct in her skeletal angles. You could open your judging terms wide open on her and be correct. She is about as unique and progressive as they come, and any Hampshire breeder understands how hard it is to build one like her. But even with the elite build of 2, don't get too carried away and miss the amazing structural value that the 1 gilt will provide. She is by far the best structured gilt in the class that could potentially offer an easier settle rate with her more feminine makeup. However, we would like to see her a notch more opened

up in her forerib and offer the same amount of center body and bone mass as our elite class winner.

Things become more interesting in our final trio as we see high breeding progressiveness in all three females. It is the structural angles of 1 over 3 in the middle pair. She is the longer bodied, cleaner fronted gilt that is more correct in the angle of her shoulder, longer hipped, and offers a bigger outline and more female look. No doubt that 3 reads with a broodier, bolder center body with more fill from forerib to flank, while also having a more prominent counting underline. But as I read her she is a notch straighter in her shoulder causing her to appear shorter necked.

In another very close pair of gilts that offer plenty of lower skeletal width, center body volume, and the potential for success, it

is a few minor differences that separate the two. Simply, 3 is leveler down her top side blending better behind her blade and through her ham-loin junction, setting her tailhead up higher and truer. She also offers just a notch more flex from hock to pastern. Now if you prefer the bigger outline, taller made stout 4 gilt that has just a notch more bone at the ground, I won't argue with you! She is a very high quality gilt, that certainly has her place in this industry to make competitive, sellable Hampshire females. We would just like to see her blend better through her rear 1/3 and see a notch more flex in her hind leg. What a fun class to sort that goes 2134.

Class 7 – Landrace Gilts Scenario: Rank these gilts as they would be selected as replacements in this young NJSA member’s Landrace herd. His focus is generating competitive show gilts to help supplement his hard work in competing for Overall NJSA Premier Breeder.



1



2



3



4

Official Placing: 1-2-3-4 • Cuts: 4-6-3 • Reasons: Ben Lenig, Indiana

I placed this class of Landrace gilts 1234. The combination gilt of structure, design, and pattern is going to start the class for me. Not only is she the proportional, balanced, attractive female of the class, but she’s also the stoutest in her ankle and yet her added bulk while maintaining design makes her a logical place to start. Keeping things simple, the lines and proportions from the side keep 2 as an easy decision to keep in second. She fits the

make and mold from the side as our class winner to make those competitive show gilts in a junior show setting. I didn’t read her feature to be as dense, her hip to be as big, and mid body to be as bulky as my class winner. I prefer the make and mold of 2 to stay in a comfortable second, she’s the gilt that’s more relaxed in her angles, softer in her mid body and fresher at the top of her neck. Some may like the added muscularity

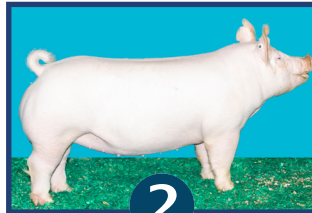
of 3. But she’s the harder made, straighter designed gilt to stay in 3rd. Simply put, I see more breeding pieces of the level designed, shapely backed gilt, who’s stouter in her forearm. Although 4 reads softer in her muscle, she’s the plain made frailer featured gilt who’s the poorest in terms of balance and presence.

Class 8 – Yorkshire Gilts

Scenario: Rank these gilts as they would be selected as replacements for a purebred Yorkshire operation that utilizes NSR Type Conference events and online sales to market breeding stock.



1



2



3



4

EPDs: +0.33 NBA, 115 MLI, 118 SPI

EPDs: +0.32 NBA, 118 MLI, 120 SPI

EPDs: +0.24 NBA, 110 MLI, 109 SPI

EPDs: +0.25 NBA, 107 MLI, 106 SPI

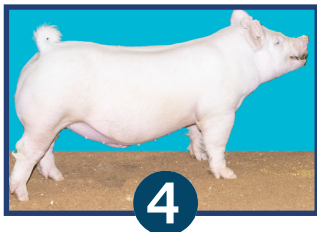
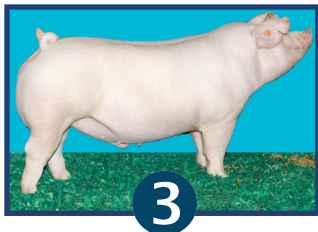
Official Placing: 1-2-3-4 • Cuts: 2-6-2 • Reasons: Ty Kim, Georgia

1234 is my ranking of the Yorkshire gilts. 1s maternal image and structural quality coupled with an impressive set of values establishes her as the kind of cornerstone female to progress for this purebred operation. She’s pulled apart in her chest and robust about her rib yet still offers the most reach and flex off either end on the drive. Gilts equipped with her captivating look and build quality should draw the attention of bidders at NSR events. Sure the high indexing 2 is neater about her neck attachment and leveler down her

top. Unfortunately, the gilt that needs to be longer and leveler out of her hip closes up a bit as she drives at me. Regardless, it’s an initial look of quality that sorts the more extended, fresher conditioned 2 over 3 in the middle. Not to mention she drives off the stouter, more flexible hind leg. No doubt 3 is the stouter skulled, bigger forearmed option who’s more pulled apart coming and going. But the heavy conditioned female is plainer ahead of her blade and tighter about her hock.

Still her incredible power and stoutness of feature hits me as the boar maker. Plus her more pliable center rib and evenly spaced underline strikes me as the more maternal option. Now honestly 4 is cleaner ahead of her blade and incredibly heavy structured and the fact that a gilt of this quality is in 4th is a true testament to the depth of this drive. But I’ll stick to my initial impression and leave drier centered, shorter hipped gilt 4th.

Class 9 Grand Drive Barrows



Official Placing: 1-2-4-3 • Cuts: 3-2-5 • Reasons: Brice Hintzsche, Illinois

What an excellent set of Grand Drive Barrows and wouldn't expect anything less in this type of setting. The committee liked the barrows 1243 with cuts of 3, 2 and 5. At first glance no doubt all high quality barrows, but the Duroc's balance and build and look from the side sorts him to the top. The red is near ideal in his proportions, the largest in terms of his forearm, and yet still appears to have the right type of muscle shape and boldness of rib to get the nod. 1 is the most youthful about his head and still the most correct in the base of his throat.

There is no doubt the Hampshire appearing barrow is bolder in the center portion of his body, appears to have plenty of shape and is stouter in his rear ankle size, but we didn't think he was as tall fronted nor as neat and tidy up front as the red barrow that wins. Now he's still the stouter featured more moderate barrow in the middle pair that appears to be rounder bodied, and simply put we just thought he balanced and proportioned better than the Yorkshire. Yes the Yorkshire is taller fronted, more elevated on his feet, and has more set to his

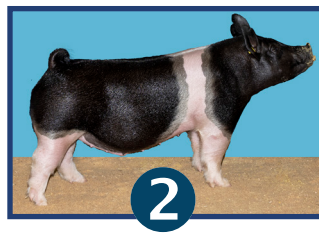
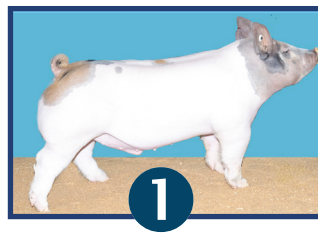
rear joint. That's why he beats the landrace in the final pair. The Landrace is still quality and by no means are we throwing him away. He's a barrow that still has muscle, is bold and fresh in his center, yet still has some stoutness. The committee just thought he was the most general in his look up front. The roughest in his pole and still the plainest in his edge up high. He's 4th.



OFFICIAL: Brice Hintzsche • Illinois

Brice Hintzsche serves as a Nutritional Representative for Earlybird Nutrition. Brice is heavily involved in all aspects of the showpig industry including volunteering at NJSA events, working pig sales, helping show families and judging livestock at the local, state, and national level. Brice attended Joliet Junior College and Iowa State University.

Class 10 Crossbred Market Hogs



Official Placing: 3-2-1-4 • Cuts: 2-3-6 • Reasons: Brice Hintzsche, Illinois

We wrote the Crossbred Market Hogs 3214 with cuts of 2,3 and 6. A top trio of barrows that really need to be analyzed to find the one that needs to start this highly competitive class. We landed on the primarily black barrow to start. Here's a good looking barrow that proportions great from the side, he's the longest off either end of his skeleton, and stouter in his feature. 3 is broadest in terms of its forehead, biggest in his lower jawline while still being right in the base of his throat. We think his width between his eyes correlates all the way back. He is the bolder bodied barrow that has more spread and shape

up high. He's still the smoothest in his transitions and longest out of his hip, and appears to have more reach out of his rear skeleton. Now 2 is no slouch and still very high quality; he is the taller fronted barrow of the top pair that is just as elite in his front one third. Consequently he's also the straighter shouldered barrow that's flatter in his body and shorter out of his hip. The traditional belted barrow is still more of the right kind for the show ring in the middle pair. The neater headed barrow is longer in his neck and more correct in his height to length ration from the side. Now the calico barrow is a true market hog

and you have to appreciate his stoutness of feature, boldness of body, and true expression of shape. Particularly out of the back side of his shoulder. He is heavier muscled than the barrow in 2nd, but is also the shorter coupled barrow that needs to be better in his proportions. Market fundamentals sort the final pair and muscle and shape are in favor of the calico. He undoubtedly has more muscle packed into his skelton. Now sure 4 is a stout headed rascal that is longer bodied, but he's the poorest in his build and just not the right kind to compete with that top trio. We marked him 4th.